

A person wearing a silver, ornate helmet and dark, textured armor is lying on their back on a grassy field. They are holding a large, bright red cloth or fabric. The scene is outdoors, with sunlight filtering through the grass. The text 'Let's Look At Art!' is overlaid in large, bold, green letters across the center of the image.

Let's Look At Art!

Family Guide • 2019

2019.

February 14 - April 14

David Alekhuogie

Newly-commissioned works that use gravity as a metaphor for human struggle.

February 14 - April 14

Mariah Garnett

A selection of films and installations from 2010 to the present day, including a new feature-length film.

May 23 - July 14

COLA 2019

New work by the eleven City of Los Angeles (COLA) Fellowship artists.

August 15 - October 6

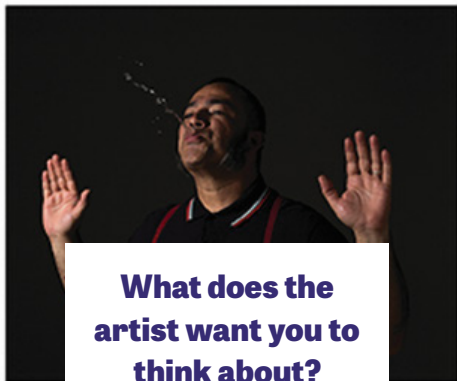
Offal

Art and conversation about the different tastes of every person, community, and culture.

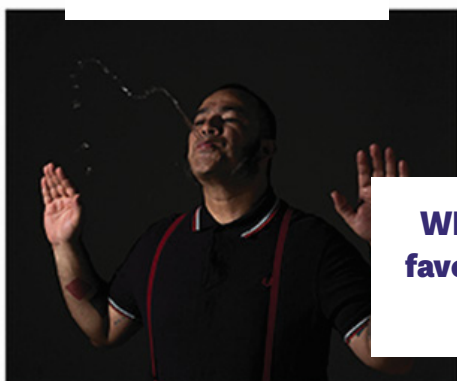
#LAMAGallery



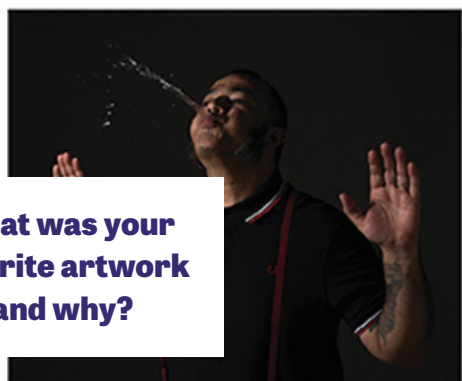
What is the first three-dimensional piece you notice?



What does the artist want you to think about?



What was your favorite artwork and why?



Look Around.

Choose, Write, & Draw.

Choose an artwork that interests you.

Title:

Artist name:

Year(s) made:

Write 2-5 sentences on what you like about the artwork.

Draw the artwork.



See if you can find the following:

Artwork with 2 or more patterns

Artwork that uses your favorite color

Artwork that is larger than you!

Artworks that use the same materials in different ways

Artwork that makes you want to dance

**On the
hunt...**

Glossary.

S J X Z K S L Q X W Y V L
C O N T E M P O R A R Y Q
U O D N G H X O I Q L F M
L X L A W I M V G Y F S P
P V X O Z B L N T Q V X W
T B H C R X P F T E Y W K
U M C N Z Q P C X R K Z B
R Y O D M L M D V K A J G
E L Z Y D G X O D K H C J
F S B C A T B R X R F O T
H Q A B S T R A C T N Z M
I N S T A L L A T I O N Z
S R P U C H F P U I Z N P

Abstract: Art that depicts a visual reality using shapes, colors, forms and gestural marks to achieve its effect.

Primary **Color:** Blue, red, and yellow are primary colors.

Contemporary Art: Art that is made in current times; it typically refers to work by living artists.

Installation Art: Large-scale, mixed-media constructions, often designed for a specific place.

Sculpture: Three-dimensional artwork made either by: carving, modelling, casting or constructing.

Los

lamag.org

Angeles

Municipal

Art

Gallery



@LAMAGBarnsdall

#LAMAGallery

#LAMAGLearn

#LAMAGPlay

It is the policy of the City of Los Angeles to provide access to its programs and services for persons with disabilities in accordance with Title II of the Americans with Disabilities Act (ADA) of 1990, as amended.

As a covered entity under Title II of the Americans with Disabilities Act, the City of Los Angeles does not discriminate on the basis of disability and, upon request, will provide reasonable accommodation to ensure equal access to its programs, services and activities.

Credits: cover, **Mariah Garnett**, *Picaresques*, 2011; page 2, **Juan Capistran**, *Hands up...(Eudaemonia)*, 2015; page 5, **Peter Wu**, *Or, the Creatures of Prometheus*, 2018; all works courtesy of the artist.

LAMAG is a facility of the City of Los Angeles
Department of Cultural Affairs.

dca